

Amery Area Public Library Newsletter

Friday, December 20, 2024

Hello Trevor,

It looks like people with outdoor winter items such as sleds and cross-country skis will have enough snow to try them out next week!

While next week is a short one because of the Christmas holiday, we will be having our weekly chess club on Monday and our monthly Pokémon Club on Thursday. See the Upcoming Event section for details.

The last week of 2024, we will be having a movie marathon, our weekly chess club, and a Noon Year's Eve party on December 31st.

In January, Inga Witscher from the PBS series "**Around the Farm Table**" will be here on Saturday, January 18th. Inga and her mother will showcase cooking with seasonal ingredients, share captivating stories from her farm, and offer a behind-the-scenes look at her filming process. Between now and then, you can watch their special Holiday episode at <https://www.aroundthefarmtable.com/past-episodes/homemade-for-the-holidays>

Happy Holidays from all the staff of the Amery Area Public Library.

Spotlight Article: Snowshoes

Interested in learning to snowshoe, but don't want to buy a set and discover it is not for you? Have relatives coming over and need something fun to do?

Head to the library and check out a pair of snowshoes! We have two adults sets with poles and two kids sets. To check their availability, use the button below. They must be picked up and returned to our library



(please do not try to put them in the Bookdrop.)

We also have a wide selection of books on snowshoeing for all ages.

[Check the availability of our snowshoes](#)

[Search for Books on Snowshoeing](#)

Weekly Poll

Last week, we asked what your favorite indoor winter activity is. Reading was the choice of over half of you (58%). The other choices were all tied at 8%: making a puzzle, spending time with loved ones, baking/cooking, watching TV/movies, and working on hobbies.

With the holiday season being upon us, there are many holiday movies and TV shows on the air.

Which of these is your favorite type of Christmas movie?

[a Hallmark movie, like A Royal Christmas](#)

[a cartoon, like How the Grinch Stole Christmas](#)

[a stop-motion movie, like Rudolph the Red-Nosed Reindeer](#)

a contemporary live action movie, like Home Alone

a classic Christmas movie, like It's a Wonderful Life

something that we forgot!

Winter Reading Challenge

January 1 - 31



Ready, set, READ! We encourage readers of all ages to challenge themselves to become reading machines this winter. From January 1-31, the Amery Area Public Library is participating in “Be a Reading Machine,” a reading challenge sponsored by **Beanstack** and **Baker & Taylor**.

Everyone who completes the challenge by reading for 300 minutes will win a prize!

We challenge our community to read and log at least 20,000 minutes during the challenge. The top-performing libraries and schools will even win special prizes:

- \$1,000 Baker & Taylor Credit plus five signed books to use as giveaways (1 school and library)

- Author Visit Sponsored by Paw Prints Publishing plus five signed books to use as giveaways (1 school and library)
- Virtual Writing Workshop with Paw Prints Publishing and Jesse Byrd plus five signed books to use as giveaways (1 school and library)
- Five signed books to use as special giveaway prizes (22 schools or libraries)

[Register for the Winter Reading Challenge](#)

Upcoming Events & Programs

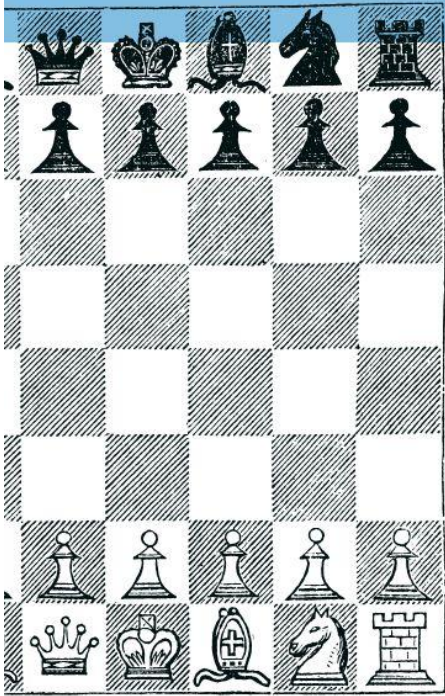


The poster features a dark blue background with a string of colorful triangular bunting flags at the top. The text is centered and uses a mix of yellow and white colors. At the bottom, there is an illustration of five hands holding up books of various colors (red, yellow, white, blue, and purple). The Amery Area Public Library logo is in the top right corner.

aa pl
AMERY AREA
PUBLIC LIBRARY

SATURDAY STORYTIME

JOIN MISS EMMA FOR
STORYTIME ON
SATURDAY, DECEMBER 21
AT 10 AM



CHESS CLUB

ALL AGES AND
EXPERIENCE LEVELS
ARE WELCOME!

Drop in anytime to play chess, learn chess tips and strategies, and solve a weekly checkmate puzzle.

MONDAYS

4:00 - 5:30 PM

DECEMBER 9 & 16: CITY COUNCIL CHAMBER

DECEMBER 23 & 30: LIBRARY VAULT ROOM

AMERY AREA PUBLIC LIBRARY

POKÉMON CLUB



TRADE CARDS AND
DO POKEMON-THEMED ACTIVITIES!

DECEMBER 26, 4-5 PM





Winter Break **MOVIE MARATHON**

Monday, December 30
12 to 3:30 pm



Happy
NOON YEAR'S EVE

Welcome the new year!
Paint fireworks, create noisemakers, play games,
and join us for the balloon drop at noon.

December 31
10 am to 12 pm

Amery Area Public Library's Special Holiday Hours

Monday, December 23rd OPEN, 9-6
 Tuesday, December 24th CLOSED
 Wednesday, December 25th CLOSED
 Thursday, December 26th OPEN, 9-6

Tuesday, December 31st OPEN, 9-2
 Wednesday, January 1st CLOSED



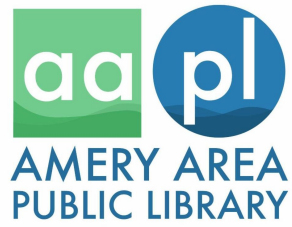
DECEMBER



2024

SUN	MON	TUE	WED	THU	FRI	SAT
1	2	3	4 Storytime - 10 am Writing Group - 4:30 - 5:30 pm	5 Friends of the Library Book Sale - 3 - 5 pm	6	7 Friends of the Library Book Sale - 9:30 am - 12 pm Winter Workshop 12 - 2 pm
8	9 Chess Club 4 - 5:30 pm	10 Mystery Book Club - 2 pm	11 Storytime - 10 am	12 Teen Thursday - 6 - 8 pm	13	14 Yule Log Cake Class* 10 am - 12 pm
15	16 Chess Club 4 - 5:30 pm	17 Homeschool Hangout - 1 pm Family Game Night 6 - 8 pm	18 Storytime - 10 am Writing Group - 4:30 - 5:30 pm	19 Non-fiction Book Club 2 - 3:30 pm	20	21 Saturday Storytime - 10 am
22	23 Chess Club 4 - 5:30 pm	24 CLOSED for Christmas Eve	25 CLOSED for Christmas Day	26 Pokémon Club - 4 - 5 pm	27	28
29	30 Movie Marathon - 12 - 3:30 pm Chess Club 4 - 5:30 pm	31 Noon Year's Eve 10 am - 12 pm Library closes at 2 pm			*Registration required. Ages 12+. Call 715-268-9340 to register.	

104 Maple St W.
Amery, WI, 54001-1261
Phone: 715-268-9340
Email: library@amerylibrary.org



Contact Us

Amery Area Public Library | 104 Maple Street West Suite B | Amery, WI 54001 US

[Unsubscribe](#) | [Update Profile](#) | [Constant Contact Data Notice](#)



Try email marketing for free today!